

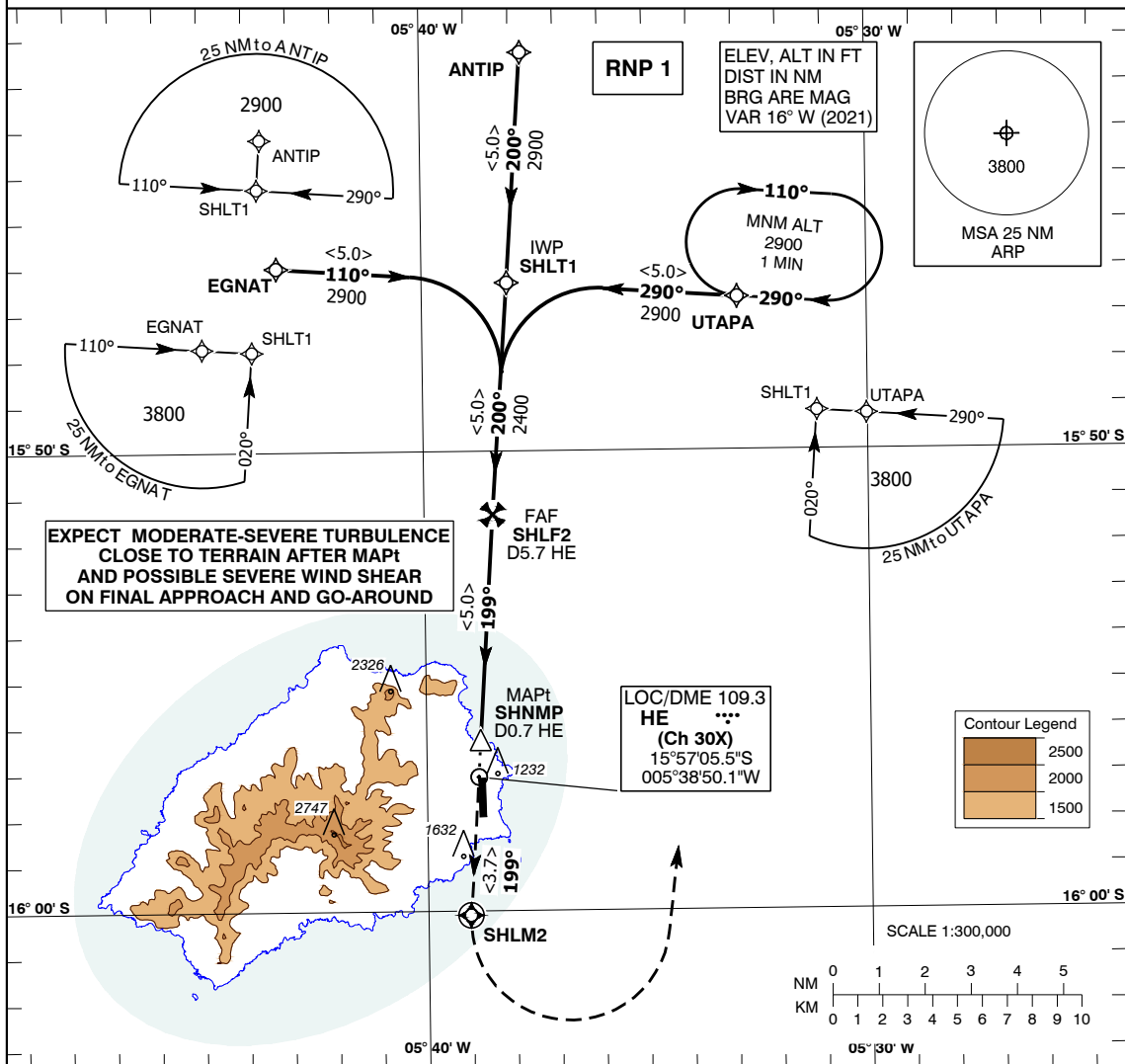
**INSTRUMENT
APPROACH
CHART - ICAO**

AERODROME ELEV **1017FT**
HEIGHT RELATED TO
THR RWY 19 - ELEV **1013FT**

TWR **118.2**
APP **119.5**

SAINT HELENA (FHSH)

Saint Helena Airport
RNP LOC/DME RWY 19
CAT A, B, C



**EXPECT MODERATE-SEVERE TURBULENCE
CLOSE TO TERRAIN AFTER MAPt
AND POSSIBLE SEVERE WIND SHEAR
ON FINAL APPROACH AND GO-AROUND**

MISSED APPROACH:
Climb straight ahead to **SHLM2**.
At **SHLM2** turn left direct
to **UTAPA** and hold
(MNM 2900).

TRANSITION ALT 6000

THR ELEV 1013

NM from THR RWY 19

Aircraft Category		A	B	C	Recommended profile (Gradient 5.2%, 320 FT/NM)						
Procedure OCA (OCH)	Procedure	1540 (527)			Distance from THR	3	4	5			
					ALT / HGT	2030 (1017)	2360 (1347)	2680 (1667)			
VM (C) OCA (OCH)	Total Area East side of RWY 01/19	Not Authorised			Rate of descent	G/S KT	80	100	120	140	160
		1880 (863)				FT/MIN	430	530	640	740	850

- NOTES:**
- Limited localiser coverage to 18° right of centreline.
 - Hold may partially be conducted outside of Controlled Airspace.
 - Final Approach offset by 5°.

CHANGE: OCA (H), FAF and MATP position, MAG VAR, Bearings, RWY designator.